

# PRINCESS V 78 M/Y ARAMIS

ELEGANCE, STYLE, UNLIMITED SPACES AND MODERN TECHNOLOGY CHARACTERIZE THIS AMAZING YACHT WHO CAN ENSURE AN INTOXICATING BLEND OF EXCITEMENT, COMFORT, PERFORMANCE AND SAFETY.





**POWERED BY TWO CATERPILLAR ENGINES THIS YACHT IS CAPABLE OF REACHING MAX 39 KNOTS WITH A CRUISING SPEED OF 26 KNOTS.**



# BOW VIEW



## STERN VIEW



## THE SUNDECK STERN AREA



## THE EXCLUSIVE AND COMFORTABLE DINING AREA



# THE EXPANSIVE SALOON WITH THE FORWARD DINING AREA



## THE CONTROL PANEL

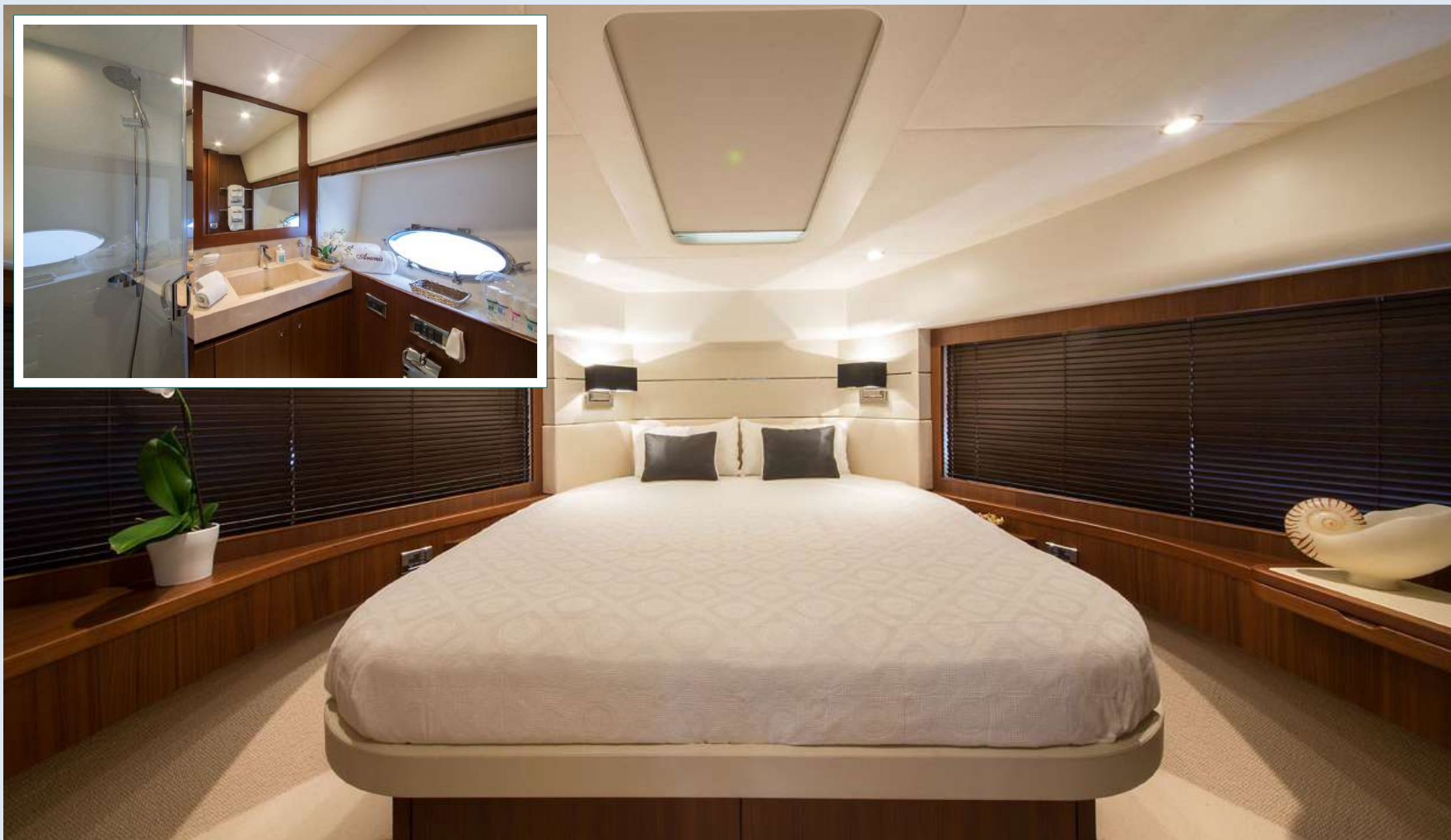




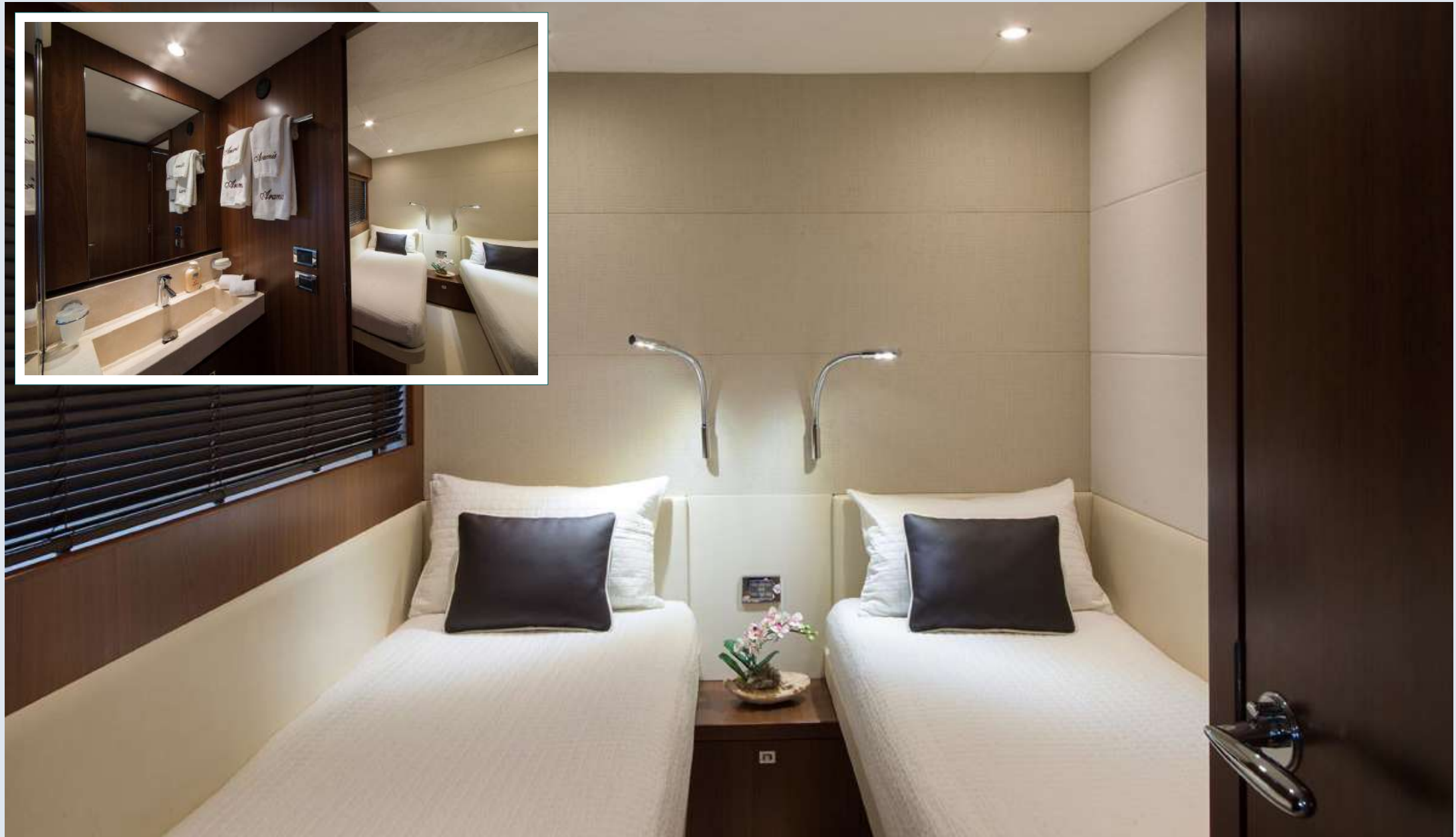
# THE EXCLUSIVE FULL-BEAM MASTER CABIN



## THE VIP CABIN



## A TWIN CABIN



## THE LARGE GALLEY



## THE CREW



# TECHNICAL SPECIFICATIONS

## LAYOUT



MAIN DECK LAYOUT



LOWER ACCOMMODATION LAYOUT

## PRINCIPAL DIMENSIONS

LENGTH OVERALL	23,83 M
FULL LENGTH	23,27 M
BEAM	5,66 M
DRAFT	1,65 M
DISPLACEMENT APPROX.	47,5 T
FUEL CAPACITY	5518 L
WATER CAPACITY (INCL. GALORIFIER)	1114 L

## ENGINES AND GENERATORS

MAIN ENGINES	2 CATERPILLAR C32 A (2X1825 MPH)
GENERATORS	1 ONAN 22,5 KW, 1 KOHLER 17 KW

## OTHER SPECIFICATIONS

MAXIMUM SPEED	39 KNOTS
CRUISING SPEED	26 KNOTS
HOURLY CONSUMPTION	400 LT/HOUR
RANGE	350 MILES
ACCOMODATIONS	4 CABINS - 8 BEDS
BED CONFIGURATION	1 MASTER, 1VIP, 4 SINGLE
BATHROOMS	3 + 1 CREW
CREW CABINS	1 CABIN